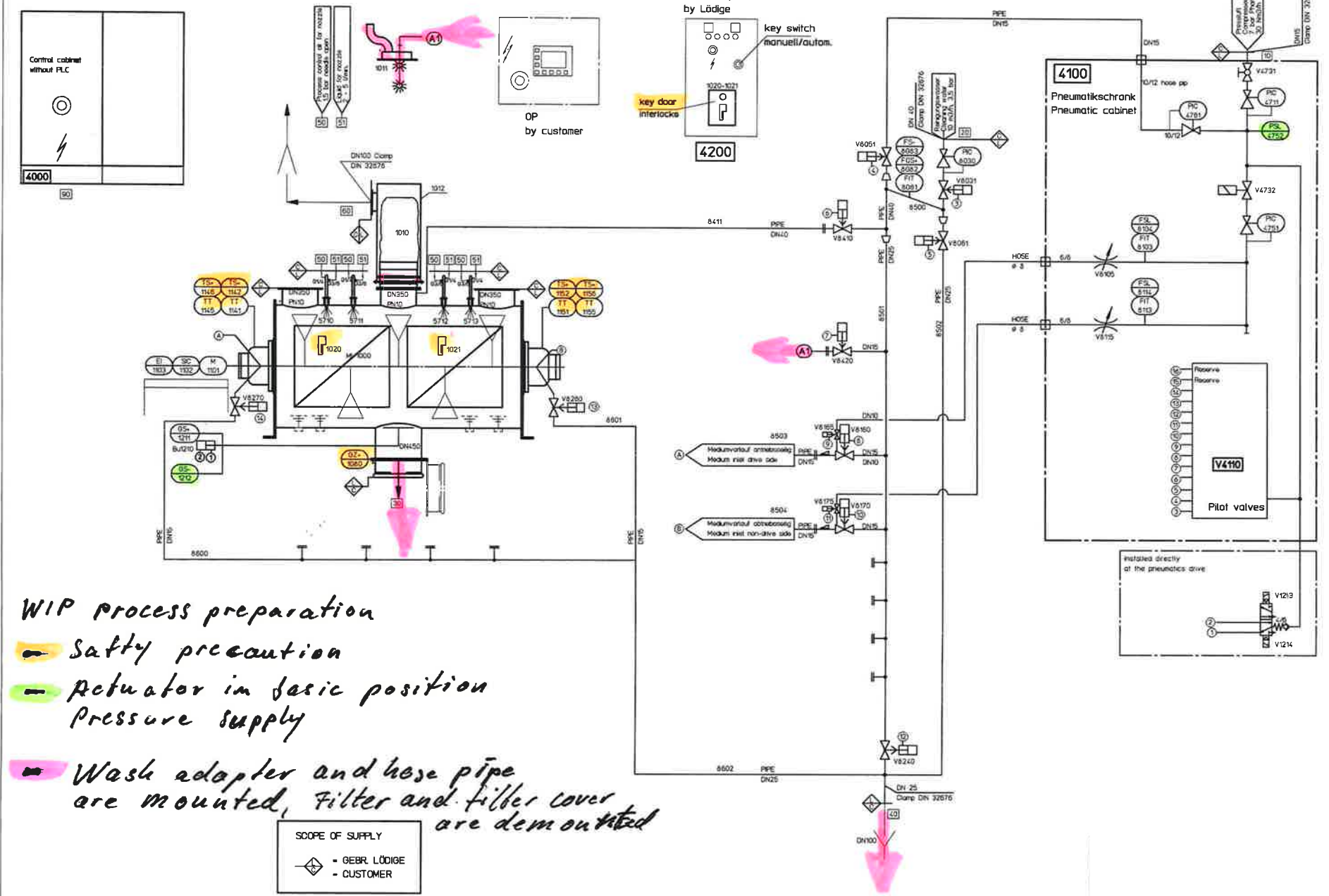


Cleaning process 1/5

1	2	3	4	5	6	7	8	9	10	11	12	13	14	15	16	17	18	19	20
---	---	---	---	---	---	---	---	---	----	----	----	----	----	----	----	----	----	----	----



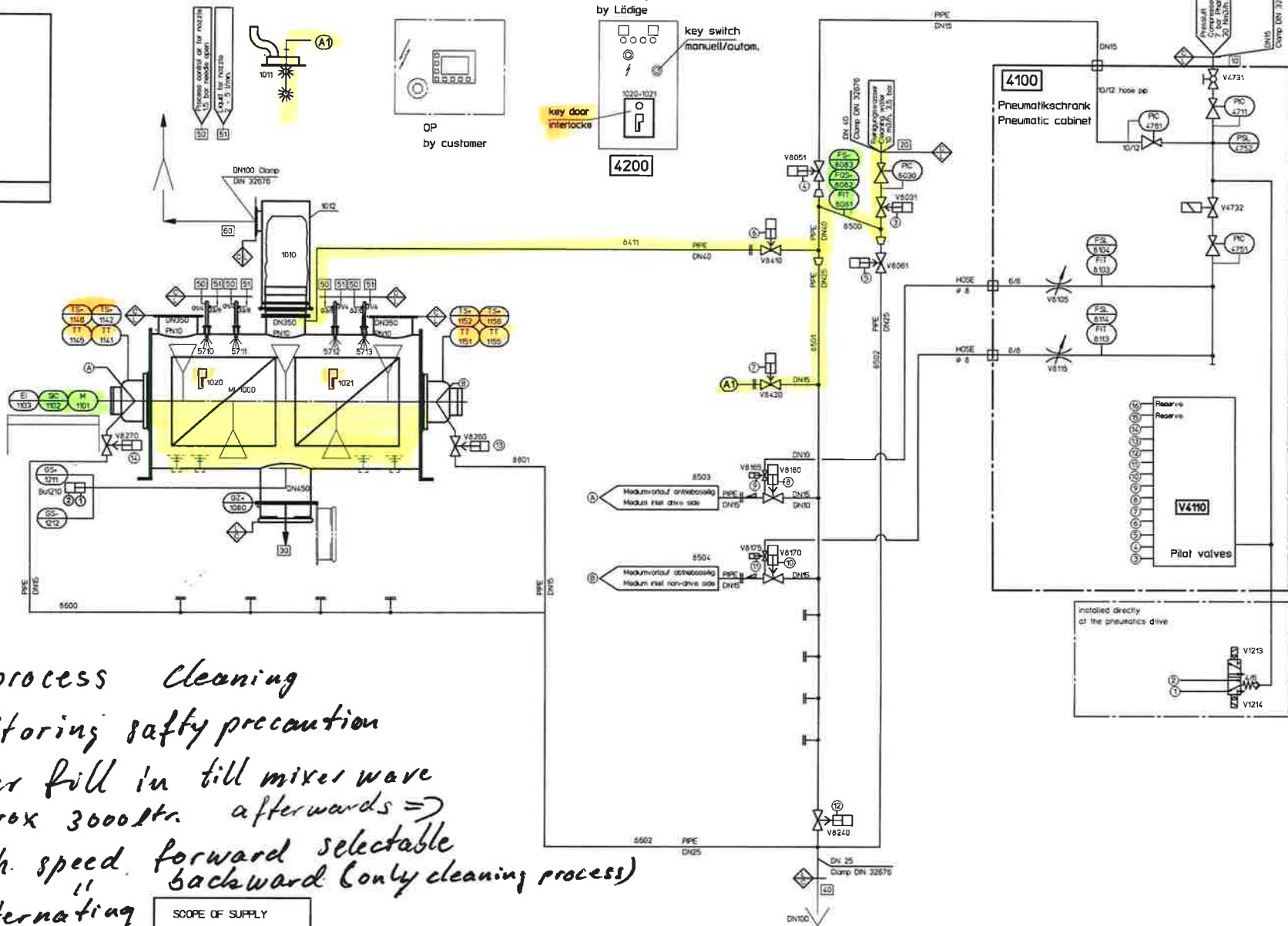
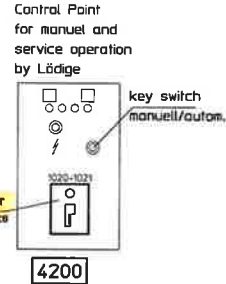
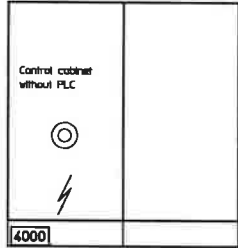
- WIP process preparation**
- Safety precaution
 - Actuator in basic position
Pressure supply
 - Wash adapter and hose pipe
are mounted, Filter and filter cover
are demounted

SCOPE OF SUPPLY

◇	= GEBR. LÖDGE
○	= CUSTOMER

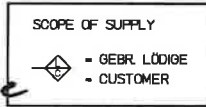
cleaning process 2/5

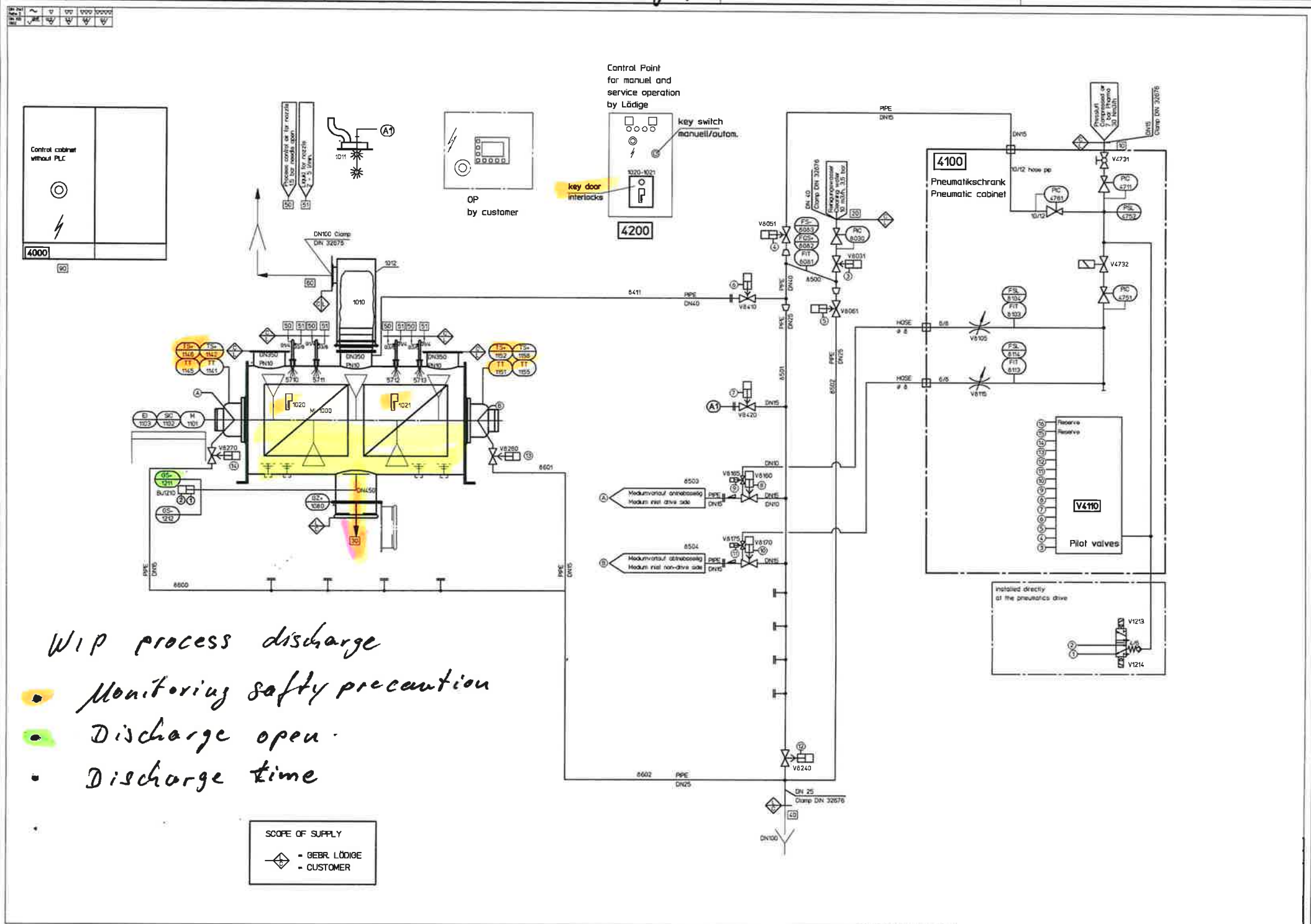
Rev. No. 1
 Date 10/2010
 DW
 DW
 DW
 DW



WIP process cleaning

- Monitoring safety precaution
- Water fill in till mixer wave approx 3000ltr. afterwards =>
- high speed forward selectable
" backward (only cleaning process)
alternating
- Cleaning time





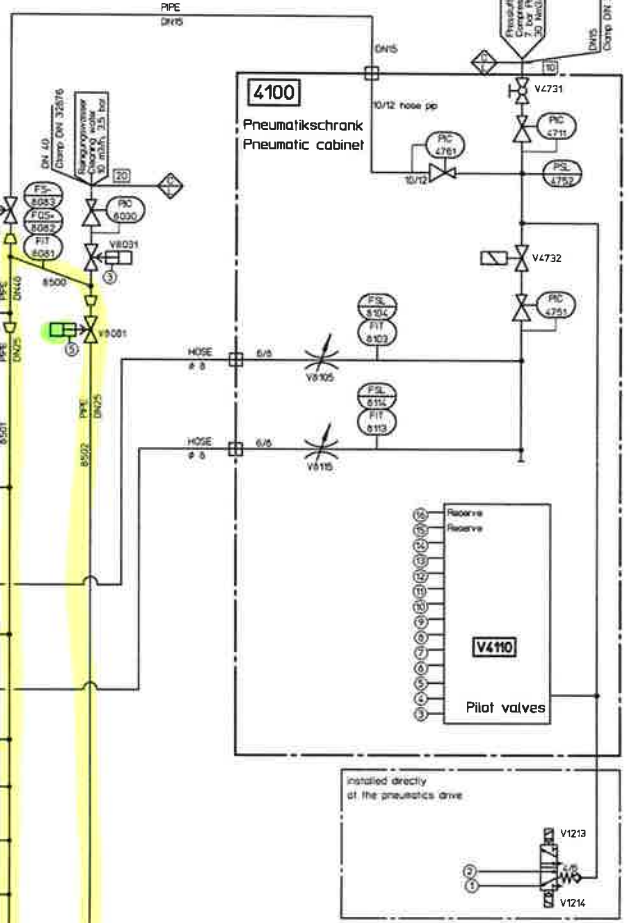
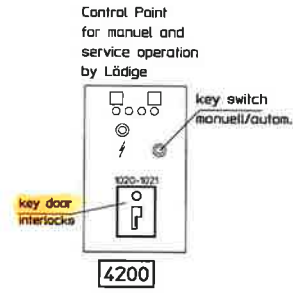
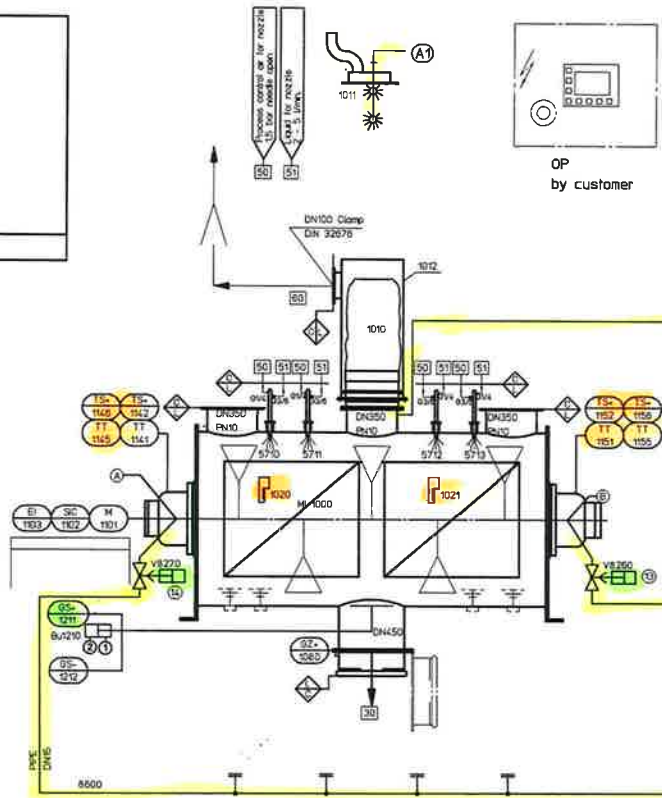
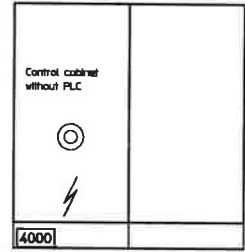
WIP process discharge

- Monitoring safety precaution
- Discharge open
- Discharge time

SCOPE OF SUPPLY
 ◆ = GEBR. LÖDIGE
 ○ = CUSTOMER

Cleaning process 4/15

Druck	~	□	□	□	□	□	□
Temperatur	▽	▽	▽	▽	▽	▽	▽
Flussrichtung	→	→	→	→	→	→	→
Druckverlust	▽	▽	▽	▽	▽	▽	▽



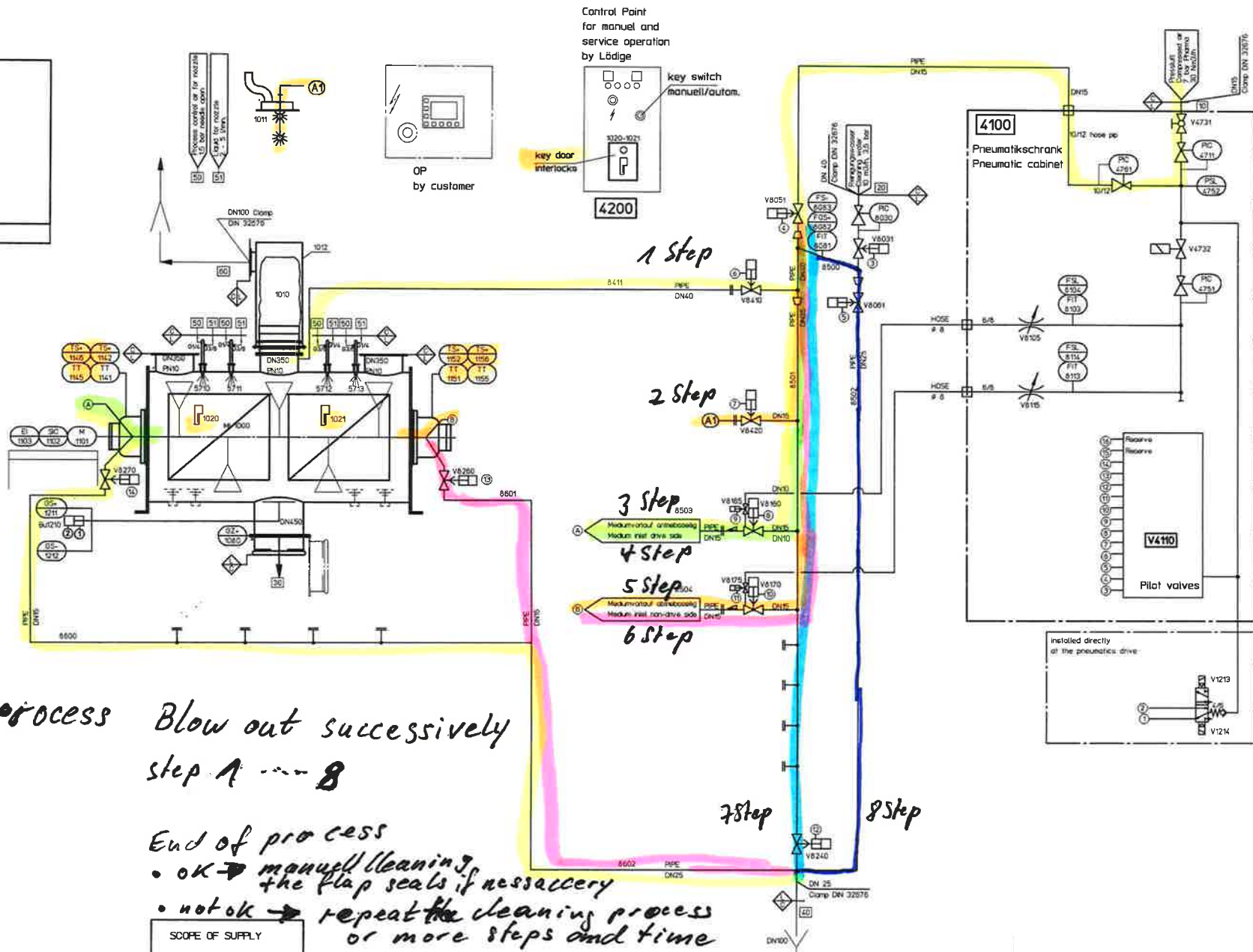
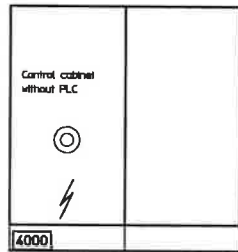
WIP process drain

- all flaps and valves are open
- drain time



Cleaning process 5/15

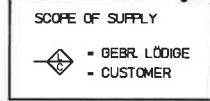
1	2	3	4	5	6	7	8	9	10	11	12	13	14	15	16	17	18	19	20
✓	✓	✓	✓	✓	✓	✓	✓	✓	✓	✓	✓	✓	✓	✓	✓	✓	✓	✓	✓



Wip process Blow out successively
step 1 ... 8

End of process

- ok → manuell cleaning, the flap seals if necessary
- not ok → repeat the cleaning process or more steps and time



- Dry manually in the end
- Re-equipment for production